

what is DocOne & How it works

This document provides an overview to the basic working of DocOne. A brief description of the main windows are shown below:

DocOne opens with the Project Explorer as shown in fig 1:

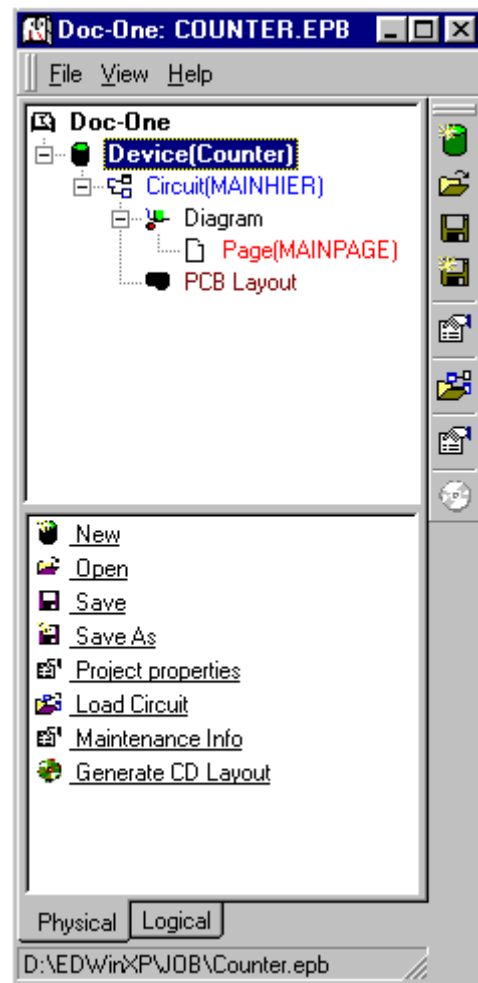


fig 1

After loading the project, the schematic and the layout can be viewed in the Schematic & PCB Layout View respectively.

The main module is the **Maintenance Info Editor**, which allows the design bureau to enter additional information to the circuit. Fig 2 shows how to invoke the Maintenance Editor.

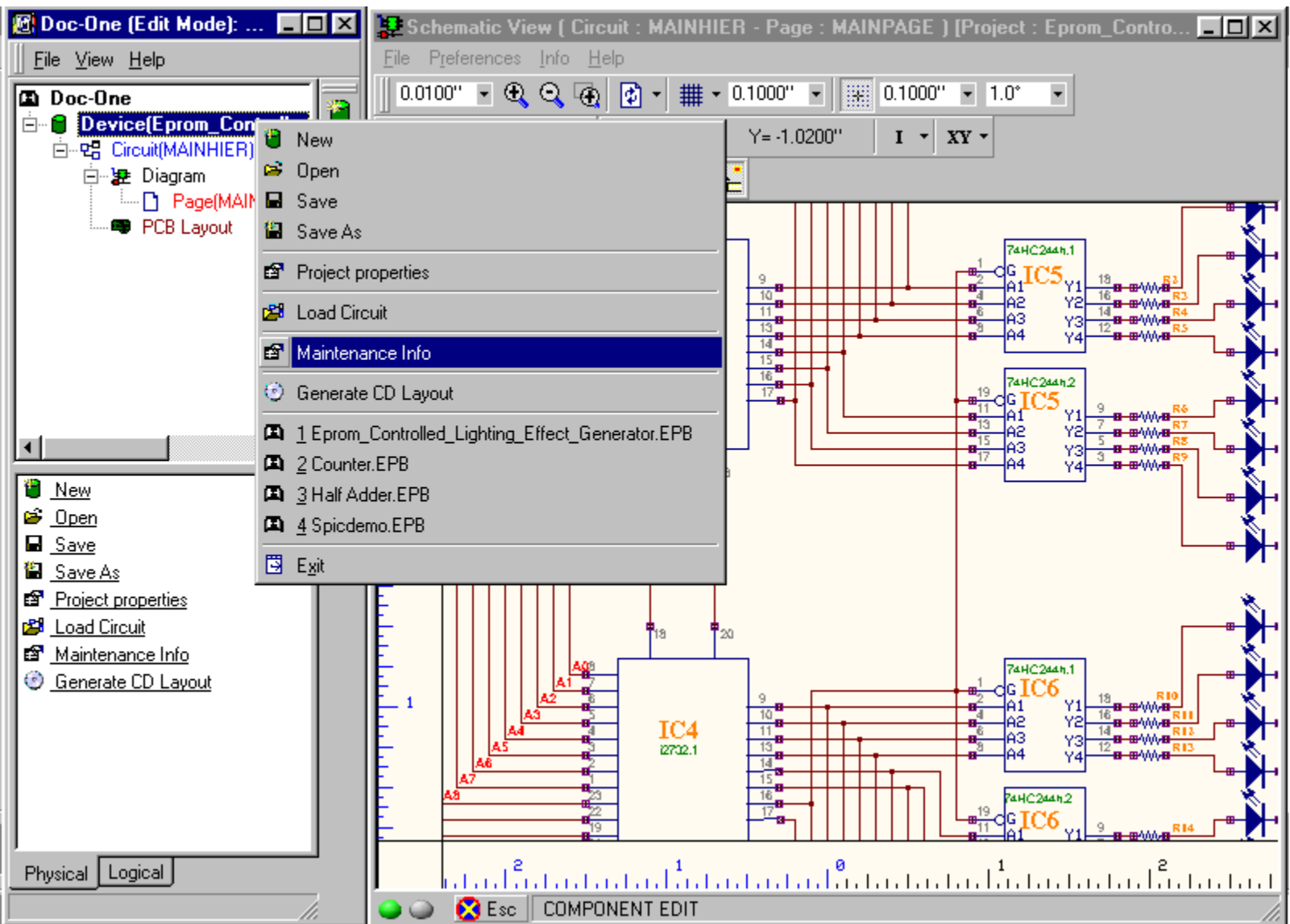


Fig 2

The Maintenance Info Editor

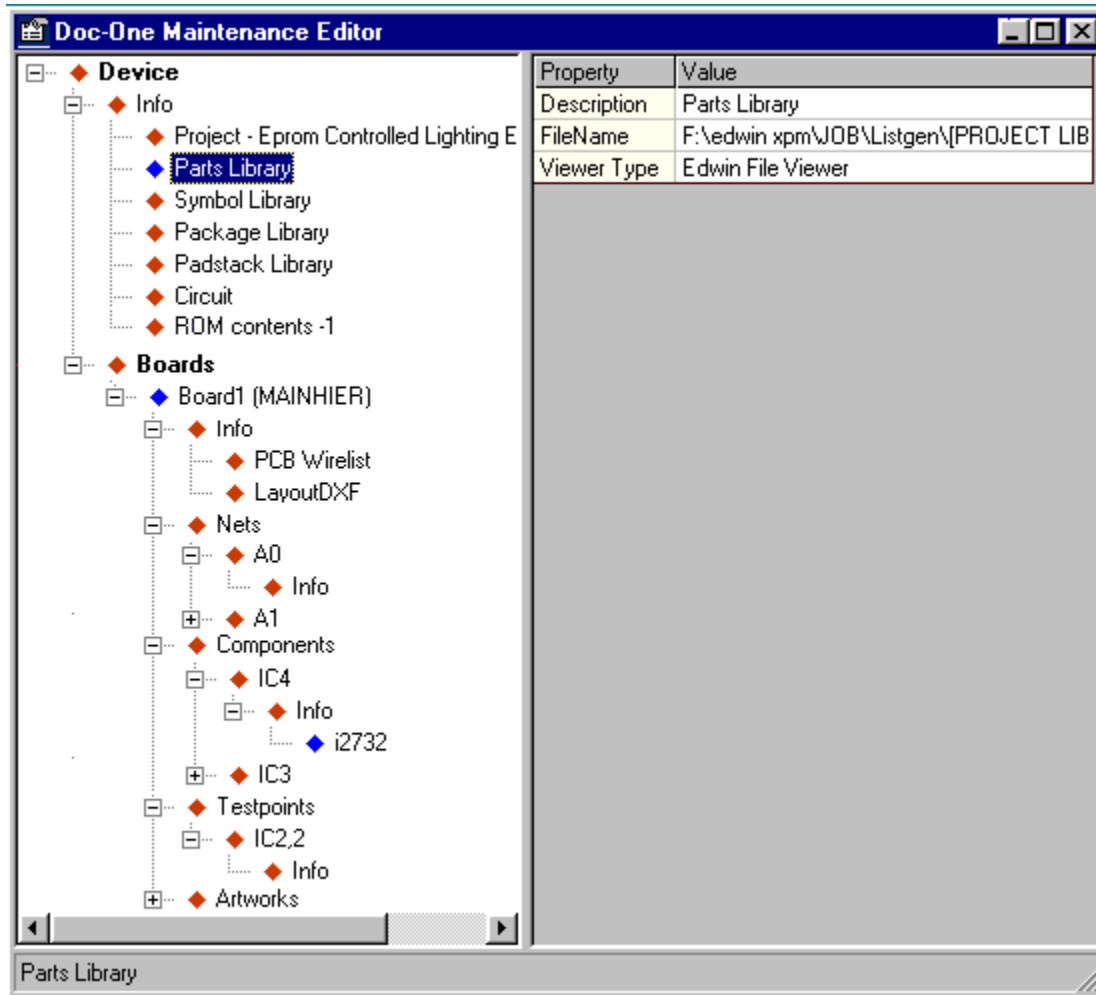


Fig 3

Each node in the above window has an Info node in which the additional information related to each item may be entered. Right click on Info, to pop up the menu Add Info. Information can be entered in the right pane as shown in fig 4.

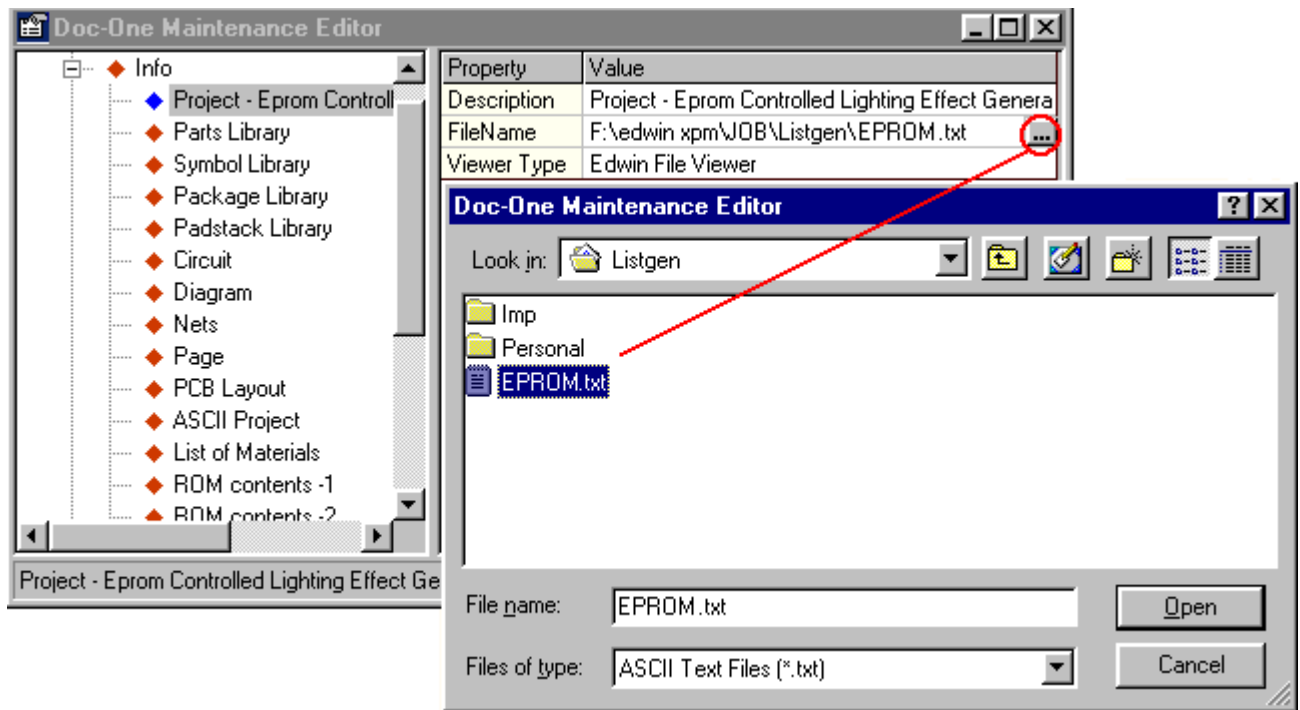


Fig 4

After entering the necessary information, they can be viewed, by right clicking on the entered information.

Fig 5 below shows a waveform information, being viewed in EDWIN Waveform Viewer.

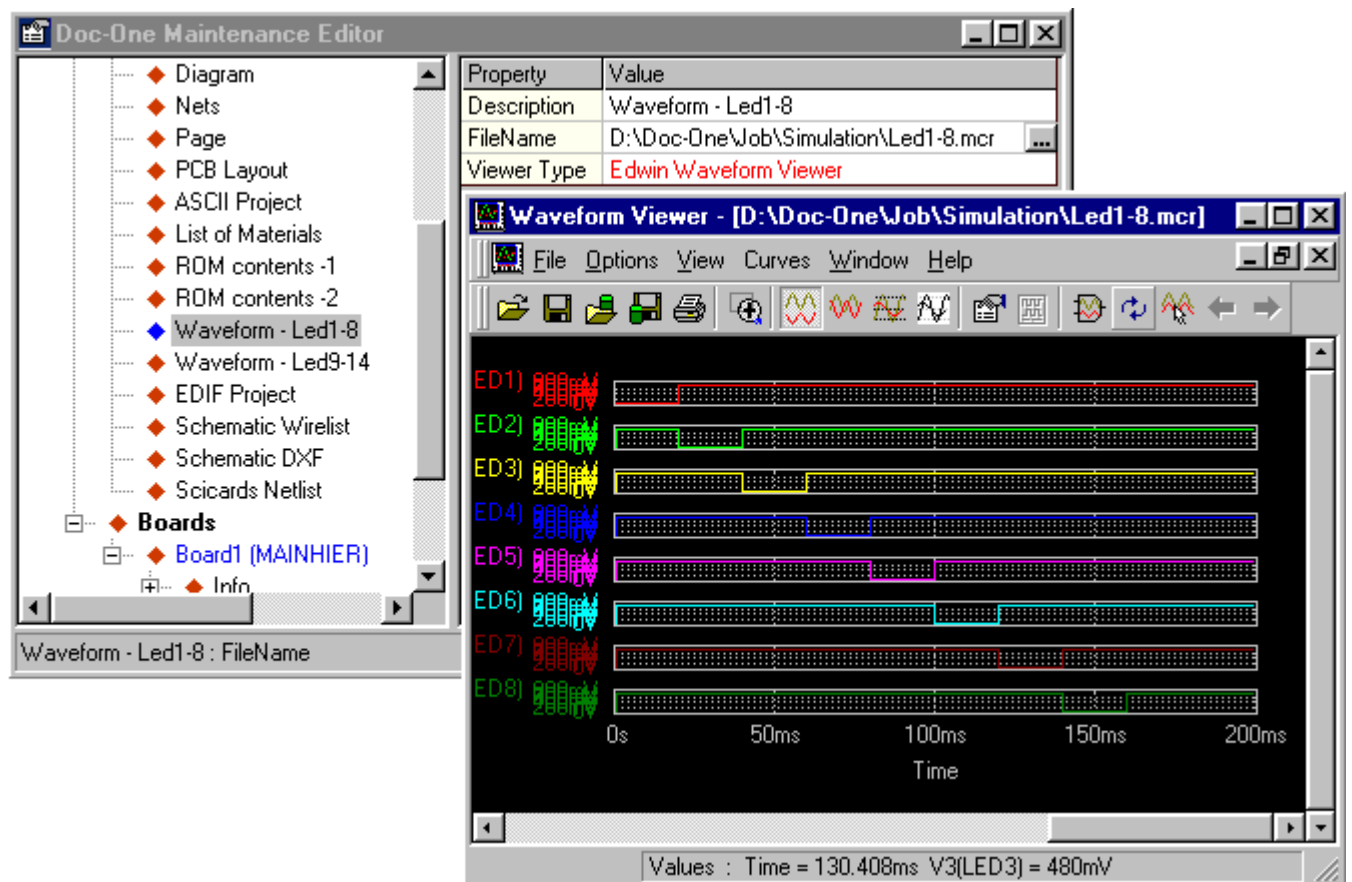


Fig 5

Fig 6 below shows an artwork information, being viewed in EDWin2000 Artwork Viewer.

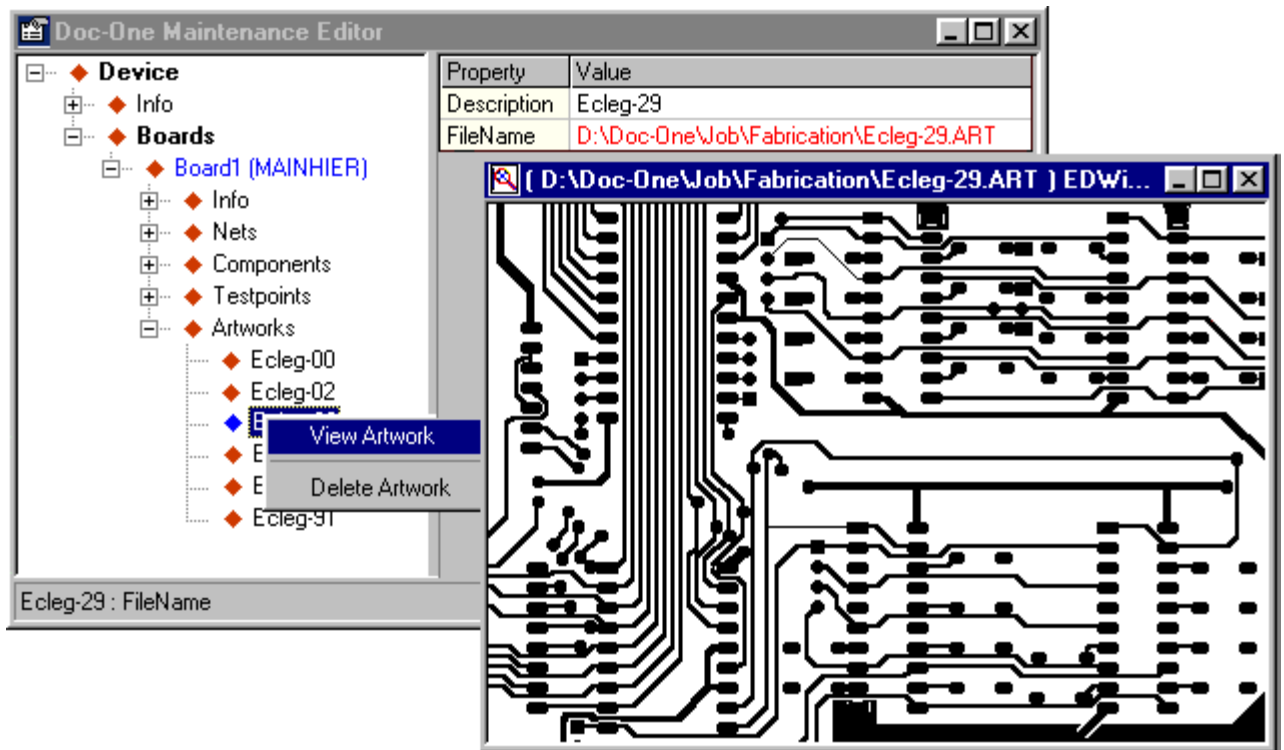


Fig 6

Apart from EDWin associated viewers, files can also be opened in windows associated viewers e.g fig 7 shows the information as viewed in PDF viewer.

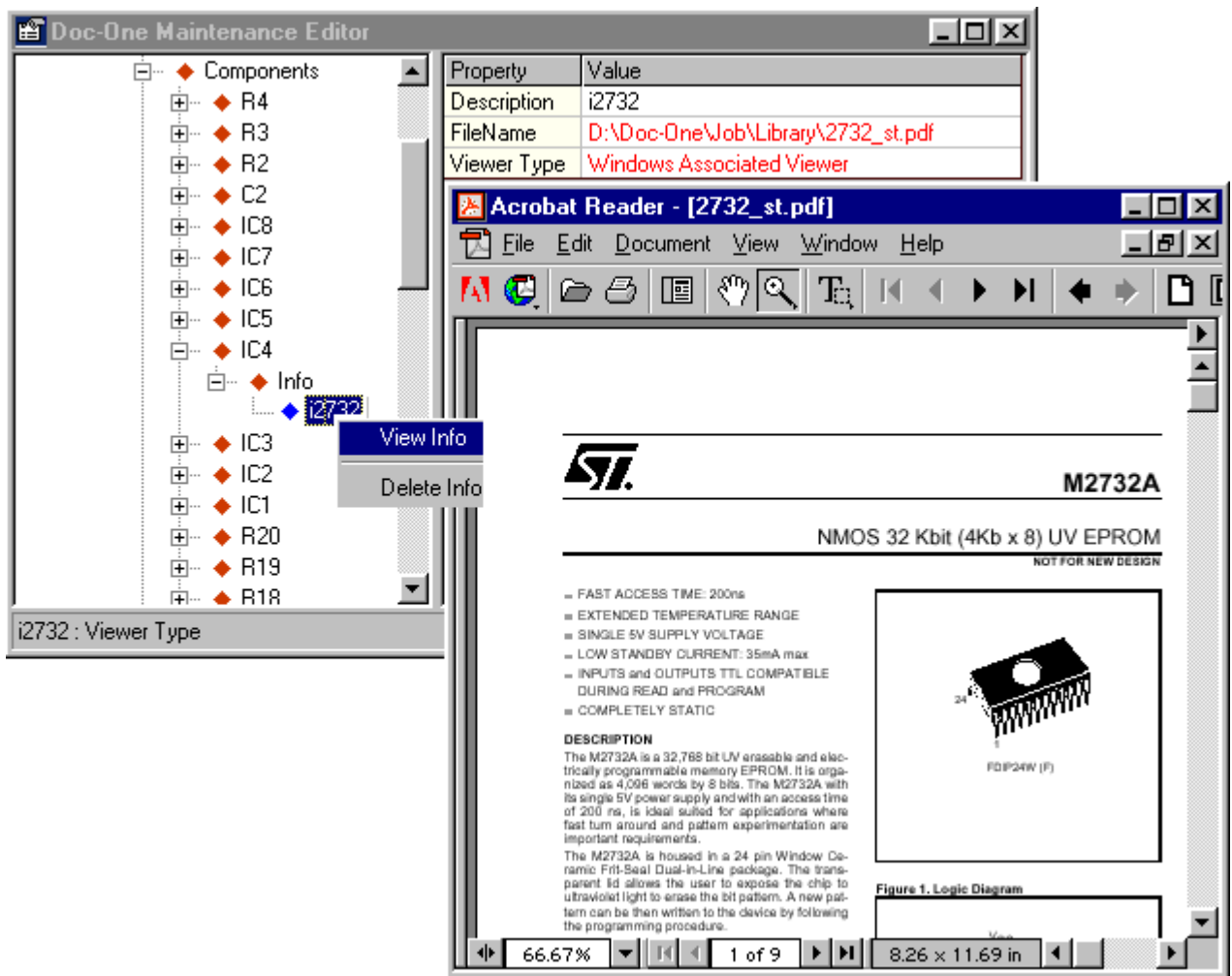


Fig 7

The detailed properties of each components and nets present in the board can be viewed by right clicking on each item. Fig 8 displays the properties of component IC6.

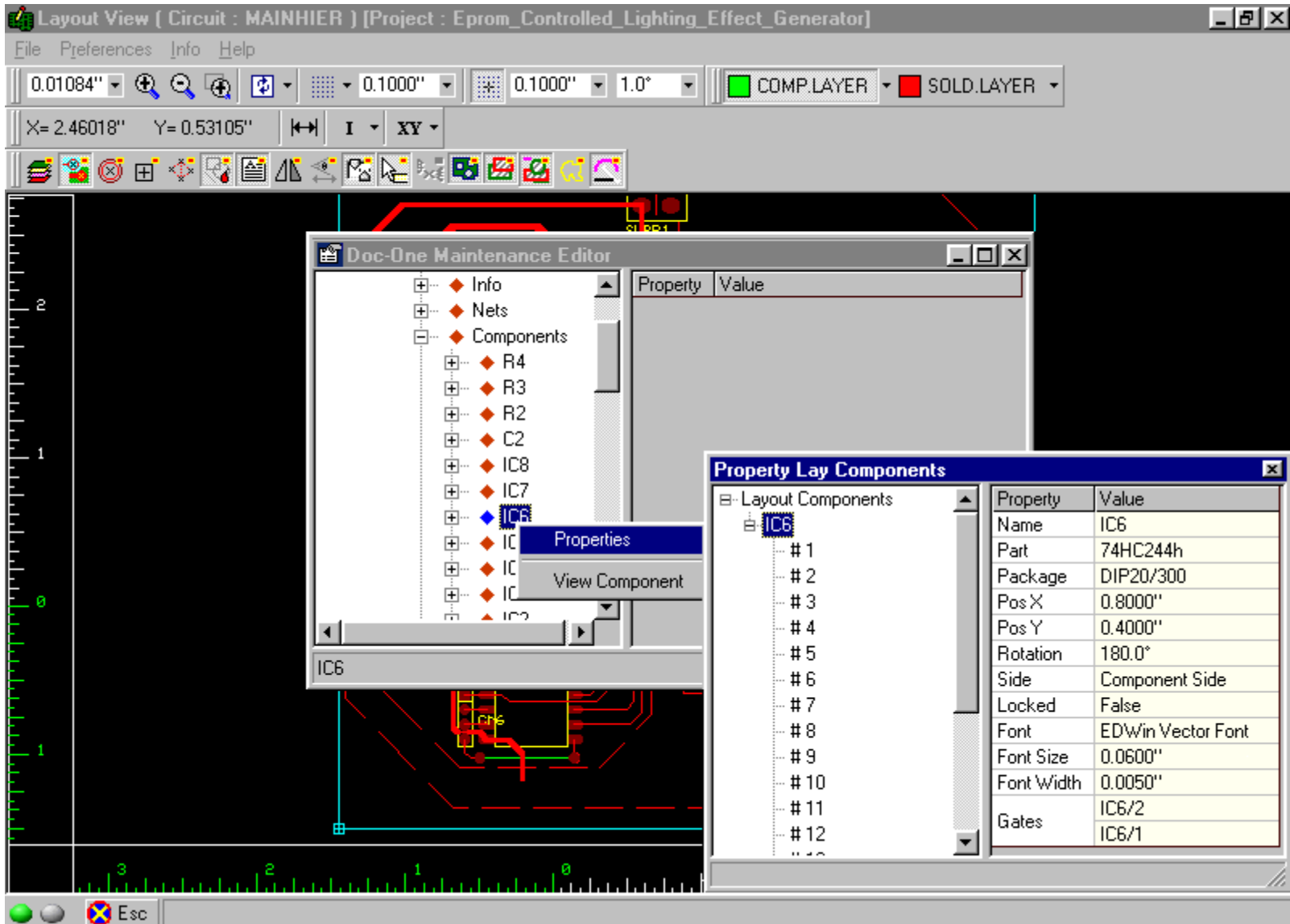


Fig 8

The part details namely pin assignment, entry points of each pin and the name of nets to which each pin belongs can be viewed by invoking the Layout Component Viewer. Similarly the net details associated with each pin on the component can be viewed as shown in fig 9 below.

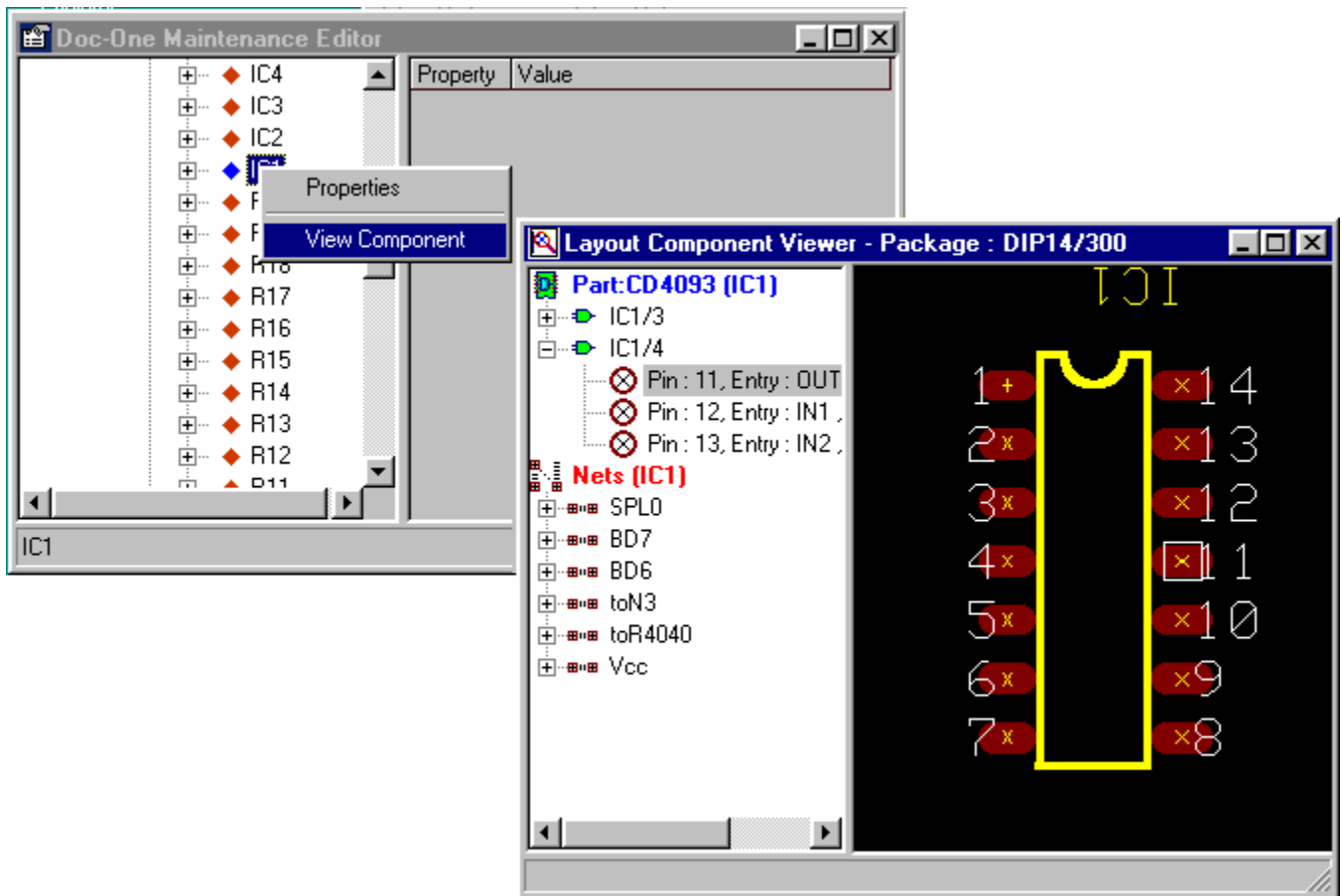


Fig 9

Other than viewing the above mentioned information from the Maintenance Info Editor, all the general information about the schematic diagram and the PCB layout can be viewed by invoking the menu Info/General in the Schematic & Layout viewers as shown in fig 10 & 11 respectively.

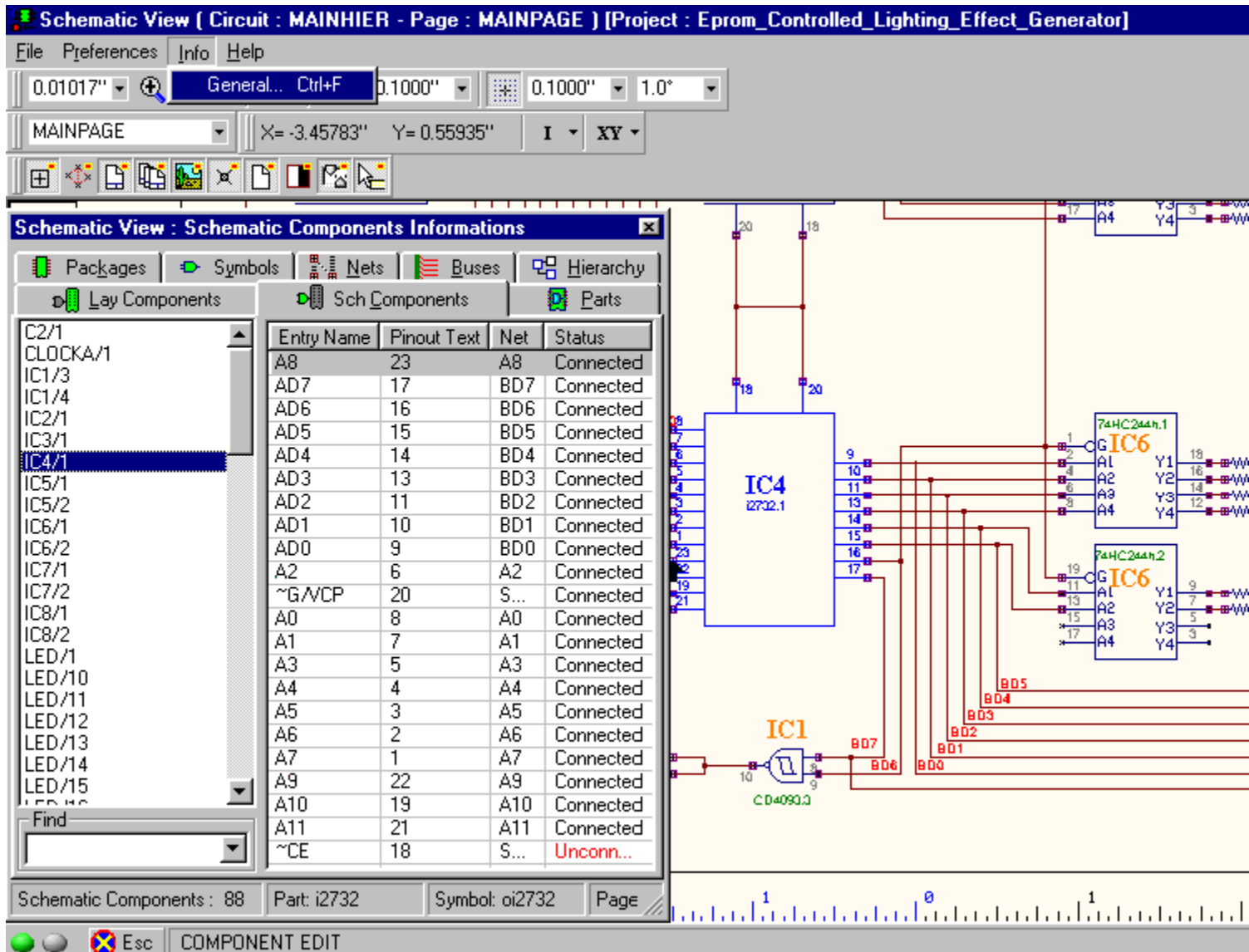


Fig 10

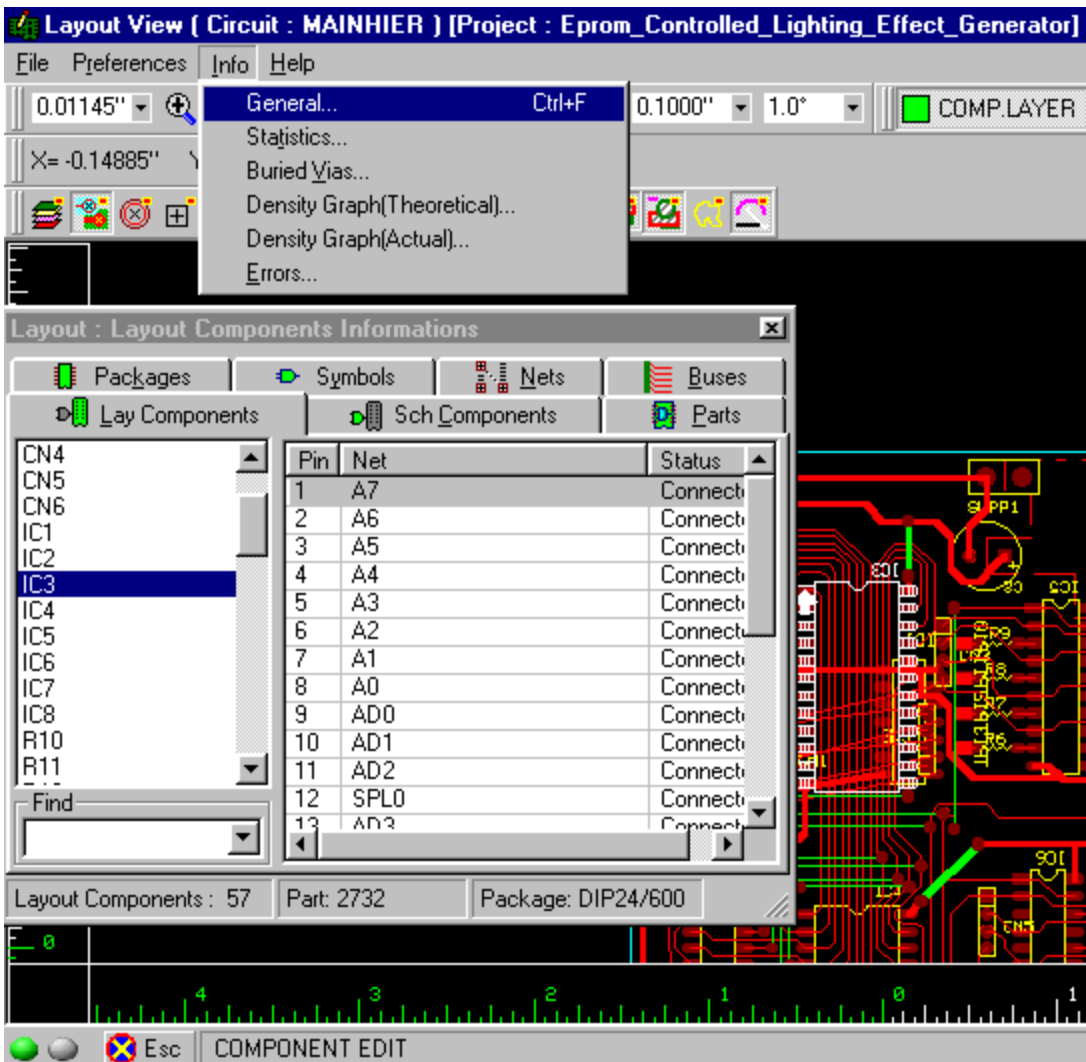


Fig 11